

**NALP2 / PAN1 Antibody (C-Term, near)**  
**Peptide-affinity purified goat antibody**  
**Catalog # AF3137a****Specification**

---

**NALP2 / PAN1 Antibody (C-Term, near) - Product Information**

|                   |   |
|-------------------|---|
| Application       | WB, E   |
| Primary Accession | <a href="#">O9NX02</a>                              |
| Other Accession   | <a href="#">NP_060322.1</a> , <a href="#">55655</a> |
| Reactivity        | Human   |
| Host              | Goat  |
| Clonality         | Polyclonal  |
| Concentration     | 0.5 mg/ml   |
| Isotype           | IgG   |
| Calculated MW     | 120515  |

**NALP2 / PAN1 Antibody (C-Term, near) - Additional Information****Gene ID** 55655**Other Names**

NACHT, LRR and PYD domains-containing protein 2, Nucleotide-binding site protein 1, PYRIN domain and NACHT domain-containing protein 1, PYRIN-containing APAF1-like protein 2, NLRP2, NALP2, NBS1, PAN1, PYPAF2

**Dilution**

WB~~1:1000

E~~N/A

**Format**

0.5 mg/ml in Tris saline, 0.02% sodium azide, pH7.3 with 0.5% bovine serum albumin

**Storage**

Maintain refrigerated at 2-8°C for up to 6 months. For long term storage store at -20°C in small aliquots to prevent freeze-thaw cycles.

**Precautions**

NALP2 / PAN1 Antibody (C-Term, near) is for research use only and not for use in diagnostic or therapeutic procedures.

**NALP2 / PAN1 Antibody (C-Term, near) - Protein Information****Name** NLRP2**Synonyms** NALP2, NBS1, PAN1, PYPAF2**Function**

Suppresses TNF- and CD40-induced NFKB1 activity at the level of the IKK complex, by inhibiting NFKB1A degradation induced by TNF. When associated with PYCARD, activates CASP1, leading to the secretion of mature pro-inflammatory cytokine IL1B. May be a component of the inflammasome, a protein complex which also includes PYCARD, CARD8 and CASP1 and whose function would be the activation of pro-inflammatory caspases.

**Cellular Location**

Cytoplasm

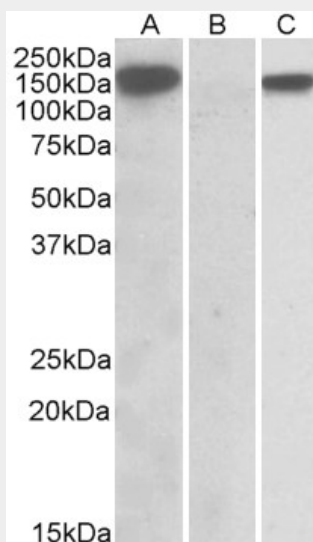
**Tissue Location**

Expressed at high levels in lung, placenta and thymus and at lower levels in ovary, intestine and brain (PubMed:15456791). Highly abundant in oocytes and early embryos, however poorly expressed in somatic tissues such as brain, kidney, liver and spinal cord (PubMed:30877238).

**NALP2 / PAN1 Antibody (C-Term, near) - Protocols**

Provided below are standard protocols that you may find useful for product applications.

- [Western Blot](#)
- [Blocking Peptides](#)
- [Dot Blot](#)
- [Immunohistochemistry](#)
- [Immunofluorescence](#)
- [Immunoprecipitation](#)
- [Flow Cytometry](#)
- [Cell Culture](#)

**NALP2 / PAN1 Antibody (C-Term, near) - Images**

HEK293 lysate (10ug protein in RIPA buffer) overexpressing Human NLRP2 with DYKDDDDK tag probed with AF3137a (1ug/ml) in Lane A and probed with anti- DYKDDDDK Tag (1/5000) in lane C. Mock-transfected HEK293 probed with AF3137a (1mg/ml) in Lane B. Primary incubations were for 1 hour. Detected by chemiluminescence.

**NALP2 / PAN1 Antibody (C-Term, near) - References**

Toll-like receptor 2 and NALP2 mediate induction of human beta-defensins by fusobacterium

nucleatum in gingival epithelial cells. Ji S, Shin JE, Kim YS, Oh JE, Min BM, Choi Y, Infection and immunity 2009 Mar 77 (3): 1044-52. PMID: 19103770